

### Features

- 1/2.7" 2 Megapixel CMOS Sensor
- 2.8-12mm Vari- Focal Lens
- Full HD (1920x1080P)
- Digital WDR (Wide Dynamic Range)
- Day & Night Function
- 24IR LEDs, IR Distance 20m
- OSD Button
- Auto Gain Control
- DC 12V

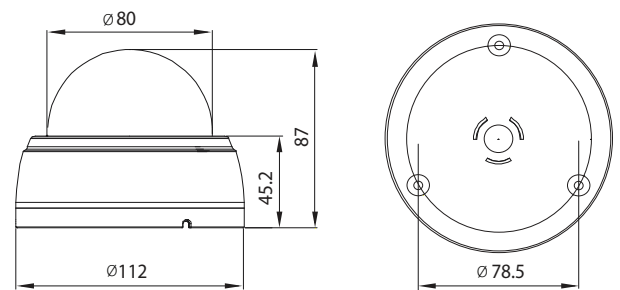


**AHD**

### Specifications

Imaging Sensor	1/2.7" Megapixel CMOS Sensor
HD-SDI Scanning System	Progressive Scan
Analog Scanning System	-
Number of Active pixels	1944 (H) x 1092 (V) = 2,122,848 (pixel)
Total Number of pixels	2010 (H) x 1108 (V) = 2,227,080 (pixel)
S/N Ratio	More than 50dB (AGC OFF)
AHD Video Output	AHD 1920 X 1080
Analog Video Output	-
Min.Illumination	0 Lux with IR LEDs ON
Lens	2.8~12mm Vari Focal HD Lens
Electronic Shutter Speed	Auto, 1/25,30,50,60,100,120,250,500,1000,3000,10000sec
White Balance	AWB (INDOOR or OUTDOOR), USER, 8000K, 6000K, 4200K, 3200K, HOLD
Backlight Compensation	0~16, Center Weight
Auto Gain Control	1~5
Flickerness	OFF, 50HZ, 60HZ
Lens Shading Compensation	OFF, ON
Special Features	Privacy Zone, Motion, HLC
Adjust	COLOR GAIN, COLOR HUE, SHARPNESS, CONTRAST, BRIGHT
Language	English (Selectable)
Day & Night	AUTO, B&W, COLOR, EXT
2D DNR	Set as Default
D-WDR	Set as Default
Privacy Masking	On (2 Zone Selectable) / Off
Motion Detection	On (Sensitivity Selectable) / Off
D-EFFECT	MIRROR, FLIP
IR LED	24pcs IR LED
Construction	Plastic Body
Operating Temp	-10 °C ~ 50 °C (14 °F ~ 122 °F)
Storage Temp	-20 °C ~ 60 °C (4 °F ~ 140 °F)
Humidity	0% to 90%
Supplied Voltage	DC12V±10%
Power Consumption	80mA, Max. 280mA IR LEDs On
Dimension(WxHxD)	Ø112 x 87(H)mm (Ø4.40 x 3.42(H) inch)
Weight	Appx. 200g (0.44 lbs)
Certification	CE, FCC

### Dimensions (Unit:mm)



Design and specifications are subject to change without notice.